



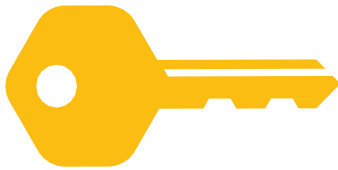
We are JPA

Our mission is to improve the social and emotional well-being and functioning of vulnerable children so they can reach their fullest potential at home, in school, and in our community.

1901

JPA Founded by Jane Addams

“America’s future will be determined by the home and the school. The child becomes largely what he is taught; hence, we must watch what we teach and how we live.” — Jane Addams



Key Transitions Matter...

- 1. Transition to Elementary School (Kindergarten)**

A positive relationship between Kindergarten teachers and their students is a predictor of social, emotional and even academic success through elementary school.
- 2. Transition from Learning to Read to Reading to Learn (3rd Grade)**

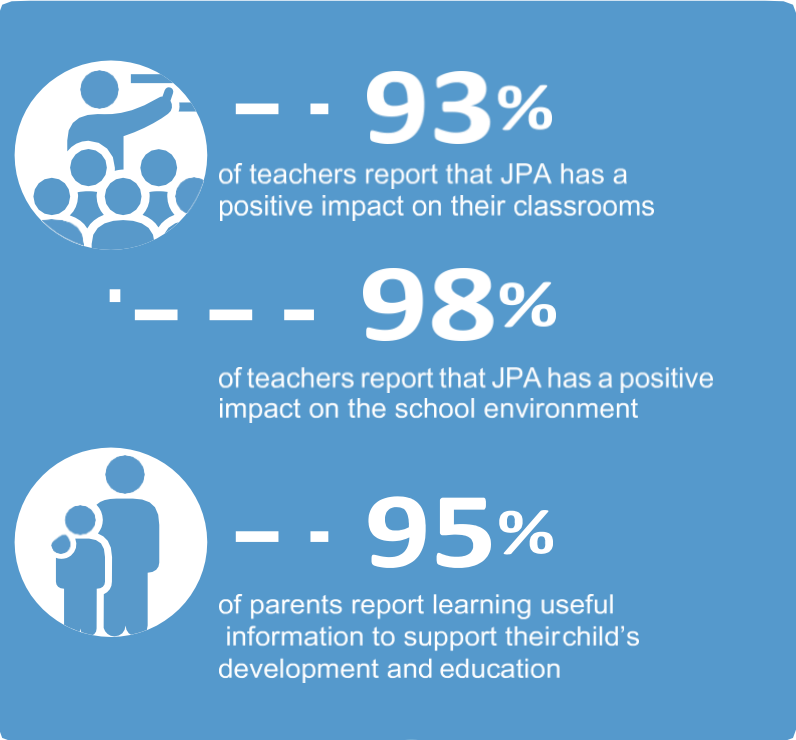
Children who read at or above grade level by third grade are more likely to graduate from high school.
- 3. Transition from Elementary to Middle School (6th Grade)**

Children who transition well from childhood to early adolescence are more likely to do well socially, emotionally, and academically.
- 4. Transition to High School (8th Grade)**

Children who make successful transitions to 9th grade increase their odds of earning a high school diploma.



90% of children and families we serve have experienced at least one – and often more – significant trauma



School-Based Services

JPA provides a variety of trauma-informed programs and services to educators in Pre-K, elementary, and middle schools:

- Individual therapy
- Small group child therapy
- Psychoeducational classroom groups designed in collaboration with teachers
- Connect to Kids (C2K) program aimed at enhancing relationships between teachers and students — a predictor of social, emotional and academic success
- 9th Gear program aimed at helping teens make successful transitions to high school
- Professional development & training on social-emotional development, supporting children with challenging behaviors, and children's mental health
- Support & supervision for social workers and teachers
- Parent support committees



Child Welfare

JPA's child welfare team provides expert consultation and support to multiple partners in the following areas:

- Theories of change
- Implementation and outcomes evaluation
- Conducting intensive case reviews on services, outcomes, and experiences of study participants to inform practice and policy
- Practice and evaluation challenges and strategies in engaging vulnerable families in services
- Applying developmental, trauma, and relational lenses to evaluation, program design, and training for frontline professionals
- Utilizing quantitative and qualitative methods and implementation science to identify barriers to outcomes and to help continuous quality improvement efforts
- Improving child-welfare practice and program level decision-making
- Assessing and building evaluation and quality improvement capacity
- Conducting in-depth evaluations to identify permanent homes in best interest of children in care

New Light

JPA offers support for people navigating challenges in all stages and walks of life at its Lincoln Park location:

- Families
- Children
- Adolescents
- College students
- Couples and families

Professional Development & Training

JPA provides workshops and professional development to clinical and school staff, community partners, and other agencies on trauma, child development, mental health and social emotional development, among other topics.

Partnerships

JPA's recent and current partners include:

- Public and private child welfare agencies
- Children's advocacy centers and the Illinois chapter
- Illinois Children's Justice Task Force
- Mental health agencies and providers in Illinois and Minnesota
- Children's Place Association
- Researchers at major research universities and centers (e.g., University of North Carolina, Chapin Hall at the University of Chicago, Young Center for Immigrant Children's Rights, University of New Hampshire)
- Foundations
- SocialWorks Chicago
- NAMI Chicago
- Child abuse pediatricians



Recognition

- JPA earned the Chicago Board of Education's approval to provide professional development and direct services to CPS schools
- Selected by the Steans Family Foundation to participate in its innovative third grade literacy program.
- Recipient of the George Davis Bivin Fund award for advancing children's mental health



Over 2,500

Children and families served by JPA annually